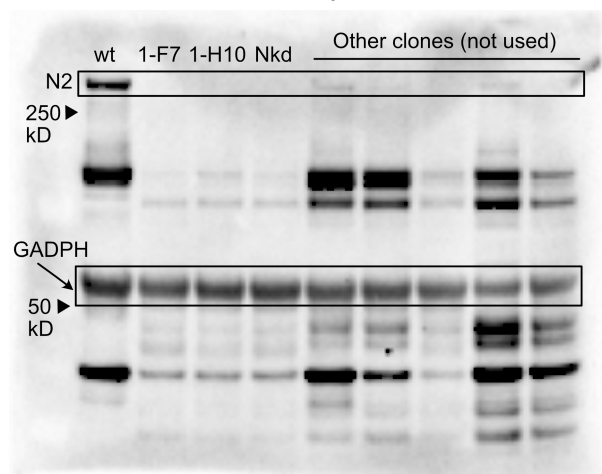
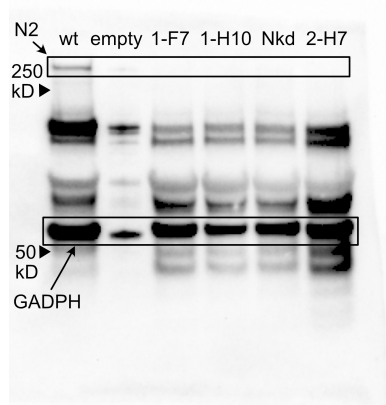
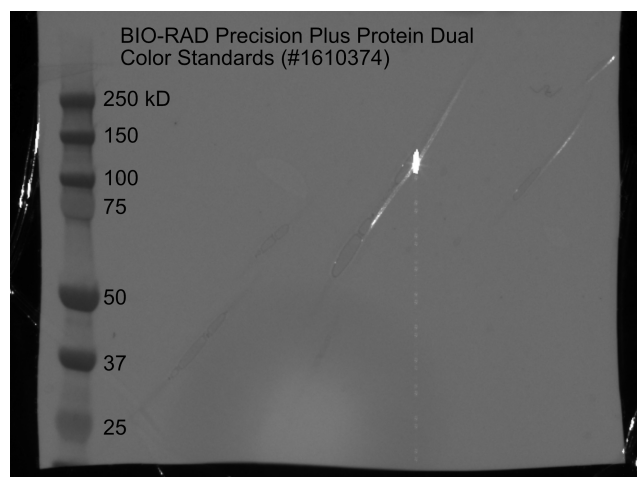


Notch2 and GAPDH protein detection



1B left

Ladder - Colorimetric



1B right

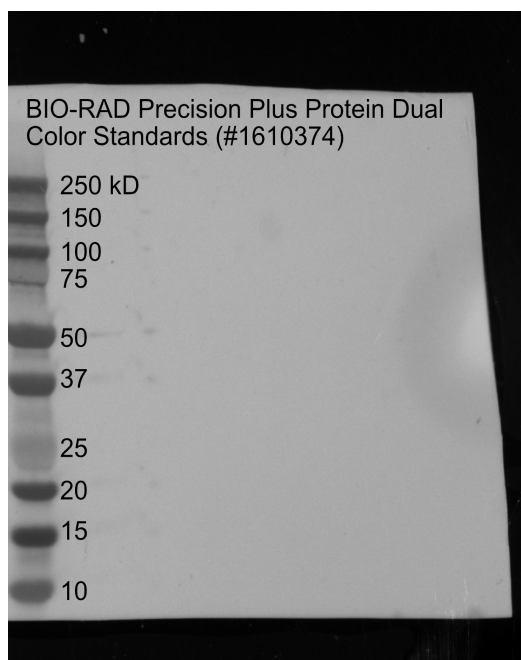


Figure 7 - figure supplement 1, source data 2. Original membranes corresponding to Figure 7 - figure supplement 1, panel B. Shows the detection or absence of endogenous Notch2 expression in CRISPR-treated C2C12 cell lines. (Top, 1B left) First Western blot performed. (Bottom, 1B right) Repeat Western blot to confirm the original results. Precision Plus Protein Dual Color Standards (BioRad) were used.